

Phil Norrey
Chief Executive

To: The Chairman and Members of
the Devon Authorities Strategic
Waste Committee

County Hall
Topsham Road
Exeter
Devon
EX2 4QD

(See below)

Your ref :
Our ref :

Date : 10 October 2016
Please ask for : Gerry Rufolo 01392 382299

Email: gerry.rufolo@devon.gov.uk

DEVON AUTHORITIES STRATEGIC WASTE COMMITTEE

Tuesday, 18th October, 2016

A meeting of the Devon Authorities Strategic Waste Committee is to be held on the above date at 2.00 pm in the Committee Suite - County Hall to consider the following matters.

P NORREY
Chief Executive

A G E N D A

PART 1 - OPEN COMMITTEE

1 Apologies for Absence

2 Minutes

Minutes of the meeting held on 29 June 2016, previously circulated

3 Items Requiring Urgent Attention

Items which in the opinion of the Chairman should be considered at the meeting as matters of urgency.

4 Waste Statistics 2015/16 (Pages 1 - 16)

Report of the head of Highways, Capital Development and Waste (HCW/16/71), attached

Electoral Divisions(s): All Divisions

5 Budget Out-Turn for 2015/16 and 2016/17 Update (Pages 17 - 22)

Report of the Head of Highways, Capital Development and Waste (HCW/16/72), attached

Electoral Divisions(s): All Divisions

- 6 Budget Proposal for 2017/18 (Pages 23 - 30)
 Report of the Head of Highways, Capital Development and Waste (HCW/16/73), attached
Electoral Divisions(s): All Divisions

- 7 Forward Work Plan for February 2017 meeting
 Head of Highways, Capital Development and Waste to report
Electoral Divisions(s): All Divisions

MATTERS FOR INFORMATION

- 8 Dates of Meetings
 08/02/2017, 28/06/2017 and 01/11/2017
Electoral Divisions(s): All Divisions

PART II - ITEMS WHICH MAY BE TAKEN IN THE ABSENCE OF THE PRESS AND PUBLIC
 Nil.

MEMBERS ARE REQUESTED TO SIGN THE ATTENDANCE REGISTER

<p>Membership</p> <p>Devon County Council Councillor Croad</p> <p>District Membership Councillor Cann (North Devon District Council) Councillor Chubb (East Devon District Council) Councillor Davey (Mid Devon District Council) Councillor Gilbert (South Hams District Council) Councillor Wood (Exeter City Council) Councillor King (Torbay Council) (Chairman) Councillor Lake (Teignbridge District Council) Councillor Morrish (Torridge District Council) Councillor Sampson (West Devon Borough Council)</p>
<p>Declaration of Interests</p> <p>Members are reminded that they must declare any interest they may have in any item to be considered at this meeting, prior to any discussion taking place on that item.</p>
<p>Access to Information</p> <p>Any person wishing to inspect any minutes, reports or lists of background papers relating to any item on this agenda should contact Gerry Rufolo 01392 382299. Agenda and minutes of the Committee are published on the Council's Website.</p>
<p>Webcasting, Recording or Reporting of Meetings and Proceedings</p> <p>The proceedings of this meeting may be recorded for broadcasting live on the internet via the 'Democracy Centre' on the County Council's website. The whole of the meeting may be broadcast apart from any confidential items which may need to be considered in the absence of the press and public. For more information go to: http://www.devoncc.public-i.tv/core/</p> <p>In addition, anyone wishing to film part or all of the proceedings may do so unless the press and public are excluded for that part of the meeting or there is good reason not to do so, as directed by the Chairman. Any filming must be done as unobtrusively as possible from a single fixed position without the use of any additional lighting; focusing only on those actively participating in the meeting and having regard also to the wishes of any member of the public present who may not wish to be filmed. As a matter of courtesy, anyone wishing to film proceedings is asked to advise the Chairman or the Democratic Services Officer in attendance so that all those present may be made aware that is happening.</p> <p>Members of the public may also use Facebook and Twitter or other forms of social media to report on</p>

proceedings at this meeting. An open, publicly available Wi-Fi network (i.e. DCC) is normally available for meetings held in the Committee Suite at County Hall. For information on Wi-Fi availability at other locations, please contact the Officer identified above.

Public Participation

Any member of the public resident in the administrative area of the County of Devon may make a presentation to the Committee on a planning application being considered by the Committee, or any consultation on a proposal by a Government Department (but not when the County Council is consulted on a proposal by a District Council) or a Review of Old Minerals Permissions applications.

Any request to make a presentation must be given to the Office of the Chief Executive's Directorate by 12 noon on the third working day before the date of the meeting. For further information please contact Exeter 01392 382299.

Emergencies

In the event of the fire alarm sounding leave the building immediately by the nearest available exit, following the fire exit signs. If doors fail to unlock press the Green break glass next to the door. Do not stop to collect personal belongings, do not use the lifts, do not re-enter the building until told to do so.

Mobile Phones

Please switch off all mobile phones before entering the Committee Room or Council Chamber

If you need a copy of this Agenda and/or a Report in another format (e.g. large print, audio tape, Braille or other languages), please contact the Information Centre on 01392 380101 or email to: centre@devon.gov.uk or write to the Democratic and Scrutiny Secretariat at County Hall, Exeter, EX2 4QD.



Induction loop system available

HCW/16/71

Devon Authorities Strategic Waste Committee
18 October 2016

Waste Statistics 2015/16

Report of the Head of Highways, Capital Development and Waste

Please note that the following recommendations are subject to consideration and determination by the Committee before taking effect.

Recommendation: It is recommended that:

- (i) the Committee note the combined performance of Devon authorities in maintaining their recycling rate at 55% and reducing the waste arisings;
- (ii) the Committee note the progress made by Mid Devon District Council and Teignbridge District Council in changing towards the “aligned” option for waste collection.

1. Summary

This report provides members with an overview of Devon authorities’ recycling performance for 2015/16. Full details can be found at Appendix I.

2. 2015/16 Headline Statistics

Household Waste

Headline Statistics	2015/16
Recycling Rate - Devon	55.1% (-0.3%)
Household Waste Growth (Devon)	-3.2%
Recycling Rate - Torbay	42.6%
Household Waste Growth (Torbay)	6%
Highest Performing Waste Collection Authority (WCA)	West Devon (54.5%)
Biggest improvement	Mid Devon (2.6%)

In 2015/16, Devon’s recycling rate reduced from 55.4% to 55.1%. Against the trend though, 4 authorities managed to increase their recycling rates – Mid Devon by 2.6%, North Devon by 0.7%, and Teignbridge and Torbay by 0.6%. See Table 1 below. The recycling rate at Household Waste Recycling Centres (HWRCs) increased by 0.1% from 81.8% to 81.9%.

Table 1 – NI192 2015/16

NI192 (Recycling Rate)	2015/16 %	Change from previous year %
East Devon	45.6	-0.7
Exeter	33.3	-0.5
Mid Devon	50.8	+2.6
North Devon	44.9	+0.7
South Hams	53.0	-0.1
Teignbridge	54.3	+0.6
Torridge	42.4	-2.6
West Devon	54.5	-2.0
DEVON	55.1	-0.3
TORBAY	42.6	+0.6

Agenda Item 4

3. Collection service changes

However, the best improvement in these difficult times came from Mid Devon who changed their collection regime to include a separate weekly food waste collection, charged for garden waste and added mixed plastics to their dry recycling collection. This brings to four the number of authorities who are now recycling over 50%. Teignbridge also changed their regime but the changes came too late in the financial year to show a significant change in the 2015/16 results. They too have moved to a weekly food waste collection, charged for garden waste and added mixed plastics and separate cardboard collections to their service. Both authorities have seen a good uptake of garden waste collections bringing in a much needed income.

The consultancy work that was carried out to try to develop a Devon Waste Partnership concluded that significant savings could be made if all authorities took up the same 'aligned' collection regime which would lead to economies of scale and less confusion amongst the public. This latter point would make way for much easier and more effective communications initiatives. As well as savings the aligned option would lead to an increase in dry recycling and reduced residual waste. The aligned option is a weekly collection of the full range of dry recyclables, a weekly food waste collection, with a fortnightly residual waste collection and a charged for garden waste collection.

Mid Devon's statistics show an increase in tonnage for all dry materials at the kerbside. From April 2017 Mid Devon's food waste will be going for anaerobic digestion under the new contract with Andigestion. DCC are working in partnership with Mid Devon to develop a new transfer station for residual and garden waste adjacent to their new depot near Uffculme. The Shared Savings Scheme mechanism will see Mid Devon benefitting from the savings made by the County Council as a result of the collection regime change.

North Devon's recycling rate increased with additional glass and paper/card tonnage, however, they still have more waste arisings than other authorities. This could be due to change in 2017/18 with their members having agreed to a charged for garden waste and a weekly food waste collection going forward, and a pilot 3 weekly residual collection similar to that undertaken by East Devon which has subsequently resulted in them implementing this service from 2017. This is likely to result in significant savings to the County Council which could be shared under the Shared Savings Scheme.

4. Organic waste

Food waste sent for anaerobic digestion was up by 15% in 2015/16. This will increase further in 2016/17 and 2017/18 as the impact of Mid Devon and Teignbridge's weekly food collections are realised. In addition Exeter are also looking at the potential to introduce a food waste collection.

Although organic waste continues to form a significant element of Devon's recycling rate the increase in food waste collection (1,090 tonnes) and reduction in garden waste collection (10%, and 8,536 tonnes) is a step in the right direction. Authorities choosing to collect food waste separately and charge for garden waste are leading this fundamental change, delivering savings to both the WCAs and DCC.

The new contracts for all types of organic waste treatment will begin in April 2017 (apart from North Devon and Torridge In Vessel Composting (IVC) waste) and will herald a shift away from IVC to anaerobic digestion and from free garden waste collections to charged for ones. Encouragingly, to date, there doesn't appear to be an increase in garden waste received at HWRCs.

5. Residual waste

NI193 measures the amount of Local Authority Collected Waste (LACW, which is household waste plus non household collected trade waste and flytipped waste) landfilled as a percentage of the total waste. Now that both Exeter and Plymouth Energy Recovery Facilities (ERFs) are commissioned this figure has reduced to 21.3% of LACW. This could potentially reduce further when the residual waste contract for North Devon and Torridge is re-procured in the future.

6. Waste arisings

Increased waste leads to increased collection and treatment costs so waste growth is of principal concern to authorities at a time when local authority finances are under acute pressure. Figure 1 illustrates Devon's actual and projected household waste growth and whilst there is a general trend for reducing waste, wide fluctuations in waste growth rates do occur affected by a broad range of factors.

Encouragingly total household waste arisings (Devon) decreased by 3.2% which is welcome news after two years of growth (see Figure 1 below). Total WCA household waste decreased by 1.9% compared to a 0.6% increase the previous year. Recycling Centres experienced an even greater reduction of 7.2%, from a 4.7% increase in 2014/15.

All authorities have reduced their collected waste arisings except for Teignbridge and North Devon although some of this could be attributed to a significant increase in the number of new homes built and this automatically results in more waste. However, North Devon's increase has come through more dustbin waste whereas Teignbridge's has come through increased recycling. North Devon continues to have 54% more waste (measured in kgs per head) than Exeter and East Devon, closely followed by Torridge and South Hams who collect 47% more. However, as mentioned earlier North Devon are planning changes which should result in reduced waste arisings.

The results of the waste arisings research project have been considered by a working group and recommendations will be included in the Waste Prevention and Reuse Strategy and reported at the next Committee meeting in February.

Figure 1 – Actual Vs Projected Household waste Growth

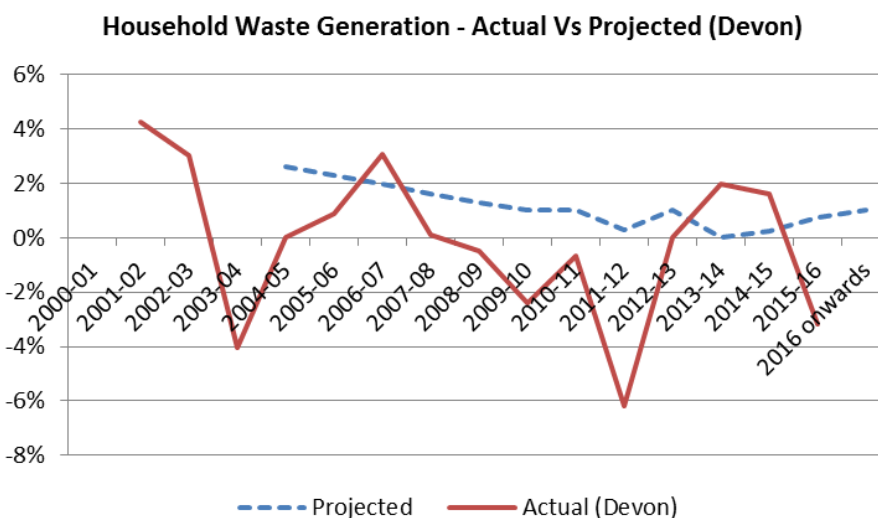
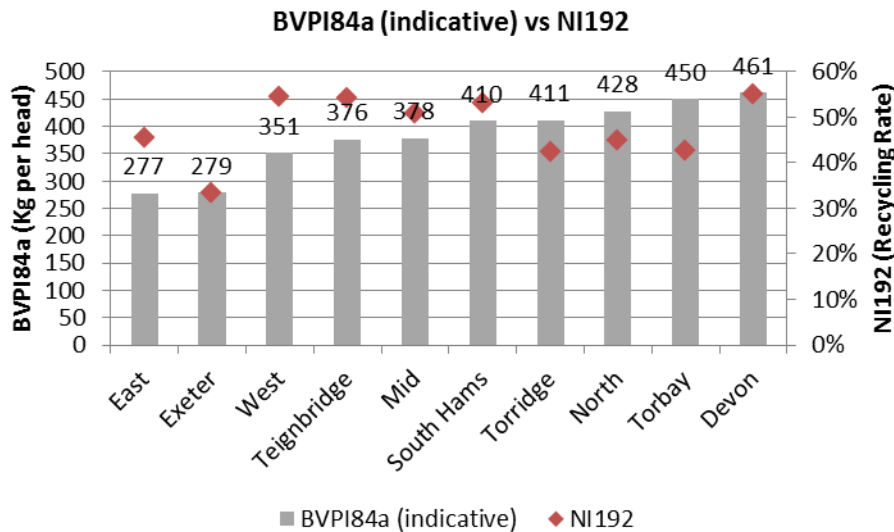


Figure 2 shows waste generation per head (BVPI84a) for each authority. East Devon continues to perform well with this indicator, generating the least amount of waste per head for DASWC authorities, closely followed by Exeter.

Agenda Item 4

Figure 2 – BVPI84a Vs NI192



7. Local Authority Collected Waste

Devon's LACW decreased by 3.1%, comprising household (-3.3%) and non-household (-1.6%). Most of this reduction was due to further charging at HWRCs for a number of types of DIY waste. Collected trade waste increased by 10%.

Incinerator bottom ash is classed as LACW. Metal recovered from incinerator bottom ash is still higher than originally expected, at 1000 tonnes. Consideration is being given as to how best to help householders understand how metal can be recycled rather than it go through the ERFs and potentially cause damage to the process plant.

8. Consultations/Representations/Technical Data

Data is sourced from individual WCA 'Statistics, Payments and Recharge' returns through Waste Data Flow and directly from WCAs. It is compiled by the County Council working in partnership with the WCAs and Torbay.

9. Financial Considerations

Managing waste toward the top of the waste hierarchy and improving reuse and recycling ensures that all waste is managed in the most cost effective manner.

Failure to report data in accordance with the requirements of the Waste and Emissions Trading Act could lead to penalties being applied by DEFRA.

10. Sustainability Considerations

Monitoring performance enables authorities to assess current services and develop longer term planning to improve performance. The EU Waste Framework Directive places an obligation on authorities to manage waste in accordance with the Waste Hierarchy in addition to economic and environmental reasons to manage waste in a more sustainable way. Diverting waste away from landfill to produce energy also reduces the carbon impact.

11. Carbon Impact Considerations

Disposal of waste to landfill in particular, represents a waste of energy and resources, and contributes toward methane emissions. Recycling and composting schemes can contribute toward reducing carbon emissions globally through the use of recycled materials, and diverting organic waste from landfill. Diversion of waste to Energy Recovery Facilities for heat and power generation also reduces the carbon impacts of managing waste.

12. Equality Considerations

There are no equality considerations associated with this report.

13. Legal Considerations

The Waste and Emissions Trading Act places a legal obligation on Waste Disposal Authorities to keep records and make waste data returns to the Environment Agency through Waste Data Flow.

14. Risk Management Considerations

Accurate and timely data ensures that risks associated with proposals or schemes are identified and mitigated.

15. Public Health Impact

Effective management of waste reduces the negative implications for public health. Accurate data ensures that baseline data reliably informs future forecasting to ensure that systems, processes and facilities are appropriate and fit for purpose.

David Whitton
Head of Highways, Capital Development and Waste

Electoral Divisions: All

Local Government Act 1972: List of Background Papers

Contact for enquiries: Annette Dentith

Room No. Matford Offices, County Hall, Exeter. EX2 4QD

Tel No: (01392) 383000

Background Paper	Date	File Reference
------------------	------	----------------

Nil

Agenda Item 4

Appendix I To HCW/16/71

DEVON		2015/16	
<i>Data Source: Statistics Payments and Recharges (SPR). National Statistics available from WasteDataFlow: www.wastedataflow.org</i>			
RECYCLED (Household Waste)			
Glass	Bring Bank	2014/15	2015/16
		5970.824	5627.024
	Kerbside	14507.951	14963.032
	Third Parties	77.469	28.046
	Recycling Centres	828.485	892.304
	Sub total	21384.729	21510.406
Paper	Bring Bank	1548.262	1292.610
	Kerbside	22458.974	25126.782
	Third Parties	842.698	718.217
	Recycling Centres	666.985	690.264
		Sub total	25516.919
Card	Bring Bank	238.455	389.090
	Kerbside	3103.419	1082.038
	Third Parties	32.725	10.626
	Recycling Centres	4351.025	4662.795
		Sub total	7725.624
Textiles	Bring Bank	333.644	332.918
	Kerbside	295.590	238.461
	Third Parties	1060.526	148.516
	Recycling Centres	762.892	647.324
		Sub total	2452.652
Plastic	Bring Bank	212.991	177.047
	Kerbside	4422.366	4610.548
	Third Parties	37.642	31.163
	Recycling Centres	1136.869	1351.988
		Sub total	5809.868
WEEE	Bring Bank	45.219	0.000
	Kerbside	152.909	122.494
	Third Parties	0.000	0.000
	Recycling Centres	7507.334	7463.236
		Sub total	7705.462
Organic	Food Waste	7376.620	8467.236
	Garden Waste	57084.579	52682.594
	Leaf Sweeping	6014.190	5189.700
	Third Parties	1106.441	1258.892
	Recycling Centres	28152.945	24018.985
	Sub total	99734.775	91617.407
Other	Bring Bank	317.613	193.339
	Kerbside	3521.489	5617.206
	Third Parties	914.873	876.952
	Recycling Centres	28881.168	27658.313
		Sub total	33635.143
SUB TOTALS	Bring Bank	8667.008	8012.028
	Kerbside	48462.698	51760.561
	Third Parties	4072.374	3072.412
	Green Waste (WCA)	70475.389	66339.530
		TOTAL WCA	131677.469
	TOTAL WDA (Recycling Centres)	72287.703	67385.209
	TOTAL HOUSEHOLD RECYCLED	203965.172	196569.740

RECYCLED (Non Household Waste)		2014/15		2015/16	
WCA	TRADE	1200.309	1429.808		
	Fly Tipped	38.872	18.806		
	Other	0.000	0.540		
		TOTAL WCA	1239.181	1449.154	
WDA	TRADE	116.175	168.275		
	Soil & Rubble	5244.519	3480.840		
	Plasterboard	746.329	588.100		
	IBA (Recovery)	686.019	1000.481		
	Other	0.288	9.976		
	TOTAL WDA	6793.330	5247.672		
	TOTAL NON H/H RECYCLED	8032.511	6696.826		

Version: 26/08/16	Status:	FINAL	
NON RECYCLED (Household Waste)			
Dustbin	2014/15	2015/16	
	140250.315	137643.221	
	MRF (Reject)	812.567	1046.824
	Bulky Collection	224.961	119.260
	Healthcare (incinerated. Inc IBA)	652.793	670.958
	Street Cleansing	4911.060	4581.220
	IVC (Reject)	191.478	259.422
	Other	0.000	0.000
	TOTAL WCA	147043.174	144320.905
	Recycling Centres	12561.922	8119.525
	Recycling Centres - ERF	4788.480	7675.120
TOTAL WDA	17350.402	15794.645	
TOTAL NON RECYCLED (WCA+WDA)	164393.576	160115.550	

NON RECYCLED (Non Household Waste)		2014/15		2015/16	
TRADE - Commercial & Industrial	2014/15	2015/16			
	11149.176	12153.133			
TRADE - Construction & Demolition	54.480	106.110			
TOTAL WCA - TRADE	11203.656	12259.243			
Fly Tipped	490.078	548.189			
Other (Non Household)	211.440	216.071			
TOTAL WCA - OTHER	701.518	764.260			
Recycling Centre (WDA)	112.760	19.040			
TOTAL NON RECYCLED (WCA+WDA)	12017.934	13042.543			

SUMMARY - HOUSEHOLD WASTE		2014/15		2015/16	
RECYCLED	104,230.397	104,952.333			
COMPOSTED	99,734.775	91,617.407			
TOTAL (REC & COMP)	203,965.172	196,569.740			
TOTAL (NON RECYCLED)	164,393.576	160,115.550			
TOTAL HOUSEHOLD (WCA+WDA)	368,358.748	356,685.290			
TOTAL HOUSEHOLD (WCA)	278,720.643	273,505.436			
TOTAL HOUSEHOLD (WDA)	89,638.105	83,179.854			

TOTAL NON HOUSEHOLD	20,050.445	19,739.369
----------------------------	-------------------	-------------------

SUMMARY - TOTAL LACW ¹		2014/15		2015/16	
TOTAL (REC & COMP)	211,997.683	203,266.566			
LANDFILL	129,584.267	80,227.244			
ENERGY RECOVERY (ERF) ²	46827.243	92930.849			
TOTAL (NON RECYCLED)	176,411.510	173,158.093			
TOTAL LACW (WCA+WDA)	388,409.193	376,424.659			

PERFORMANCE	2014/15	2015/16
NI191 (kgs residual per h/h)	462	445
NI192 (Recycling Rate %)	55.4%	55.1%
NI193 (% MSW landfilled) ³	33.4%	21.3%
BVPI 84a (kgs waste per head) ⁴	485.9	461.4
Recycling Rate (H/H) (WCA)	47.2%	47.2%
Recycling Rate (RCs) (WDA)	81.8%	81.9%
<i>NOTE: Recycling Centres includes non household</i>		

WASTE GROWTH	2014/15	2015/16
TOTAL HOUSEHOLD (WCA)	0.6%	-1.9%
TOTAL HOUSEHOLD (WDA)	4.7%	-7.2%
TOTAL HOUSEHOLD (WCA+WDA)	1.6%	-3.2%
TOTAL LACW (WCA + WDA)	2.0%	-3.1%

POPULATION	758,052	773,077
DWELLING STOCK	355,760	359,760

¹ LACW - Local Authority Collected Waste

² ERF input: Includes IBA. Includes Healthcare Waste (incinerated). Est.

³ NI193 WDA & UA Indicator Only. MSW=LACW.

⁴ Indicative figure for DASWC only - Includes reuse.

Agenda Item 4

EAST DEVON 2015/16

Status: FINAL

Data Source: Statistics Payments and Recharges (SPR). National Statistics available from WasteDataFlow: www.wastedataflow.org

RECYCLED (Household Waste)		2014/15	2015/16
Glass	Bring Bank	353.920	106.780
	Kerbside	3662.260	4093.160
	Third Parties	0.000	0.000
	Recycling Centres	140.560	148.612
	Sub total	4156.740	4348.552
Paper	Bring Bank	408.960	97.320
	Kerbside	4150.060	4503.100
	Third Parties	117.018	104.413
	Recycling Centres	198.180	216.388
	Sub total	4874.218	4921.221
Card	Bring Bank	0.000	0.000
	Kerbside	0.000	0.000
	Third Parties	0.000	0.031
	Recycling Centres	1313.720	1396.940
	Sub total	1313.720	1396.971
Textiles	Bring Bank	40.664	17.757
	Kerbside	108.700	53.263
	Third Parties	217.480	36.037
	Recycling Centres	215.845	171.833
	Sub total	582.689	278.890
Plastic	Bring Bank	0.000	0.000
	Kerbside	727.020	714.240
	Third Parties	0.000	0.000
	Recycling Centres	310.461	377.185
	Sub total	1037.481	1091.425
WEEE	Bring Bank	0.000	0.000
	Kerbside	10.170	10.080
	Third Parties	0.000	0.000
	Recycling Centres	1330.030	1332.328
	Sub total	1340.200	1342.408
Organic	Food Waste	5730.960	5684.820
	Garden Waste	324.526	0.000
	Leaf Sweeping	1575.64	1339.92
	Third Parties	5.329	7.766
	Recycling Centres	10837.815	9497.350
	Sub total	18474.270	16529.856
Other	Bring Bank	17.342	5.560
	Kerbside	633.100	662.310
	Third Parties	31.027	31.508
	Recycling Centres	5407.825	5112.970
	Sub total	6089.294	5812.348
SUB TOTALS	Bring Bank	820.886	227.417
	Kerbside	9291.310	10036.153
	Third Parties	370.854	179.755
	Green Waste (WCA)	7631.126	7024.740
	TOTAL WCA	18114.176	17468.065
	TOTAL WDA (Recycling Centres)	19754.436	18253.606
TOTAL HOUSEHOLD RECYCLED		37868.612	35721.671

RECYCLED (Non Household Waste)		2014/15	2015/16
WCA	TRADE	0.000	0.000
	Fly Tipped	11.168	4.780
	Other	0.000	0.000
	TOTAL WCA	11.168	4.780
WDA	TRADE	21.325	25.700
	Soil & Rubble	998.980	681.284
	Plasterboard	169.800	116.988
	IBA (Recovery)	230.657	364.908
	Other	0.000	0.000
	TOTAL WDA	1420.762	1188.880
TOTAL NON H/H RECYCLED		1431.930	1193.660

NON RECYCLED (Household Waste)		2014/15	2015/16
Dustbin		20656.196	20634.333
MRF (Reject)		0.000	0.000
Bulky Collection		0.000	0.000
Healthcare (incinerated. Inc IBA)		115.803	124.881
Street Cleansing		227.260	96.940
IVC (Reject)		0.000	0.000
Other		0.000	0.000
TOTAL WCA		20999.259	20856.154
Recycling Centres		1048.741	2487.528
Recycling Centres - ERF		2049.320	318.580
TOTAL WDA		3098.061	2806.108
TOTAL NON RECYCLED (WCA+WDA)		24097.320	23662.262

NON RECYCLED (Non Household Waste)		2014/15	2015/16
TRADE - Commercial & Industrial		85.454	48.160
TRADE - Construction & Demolition		0.000	0.000
TOTAL WCA - TRADE		85.454	48.160
Fly Tipped		6.920	0.880
Other (Non Household)		0.000	0.000
TOTAL WCA - OTHER		6.920	0.880
Recycling Centre (WDA)		33.620	0.000
TOTAL NON RECYCLED (WCA+WDA)		125.994	49.040

SUMMARY - HOUSEHOLD WASTE		2014/15	2015/16
RECYCLED (WCA)		10,477.721	10,435.559
COMPOSTED (WCA)		7,636.455	7,032.506
TOTAL (REC & COMP) (WCA)		18,114.176	17,468.065
TOTAL (NON RECYCLED) (WCA)		20,999.259	20,856.154
TOTAL HOUSEHOLD (WCA)		39,113.435	38,324.219
TOTAL HOUSEHOLD (WDA)		22,852.497	21,059.714
TOTAL HOUSEHOLD (WCA+WDA)		61,965.932	59,383.933

TOTAL NON HOUSEHOLD (WCA)	103.542	53.820
---------------------------	---------	--------

SUMMARY - WCA LACW ¹		2014/15	2015/16
TOTAL (REC & COMP) (WCA)		18,125.344	17,472.845
LANDFILL (WCA)		5,824.030	2,131.040
ENERGY RECOVERY (ERF) ² (WCA)		15,267.603	18,774.154
TOTAL (NON RECYCLED) (WCA)		21,091.633	20,905.194
TOTAL LACW (WCA)		39,216.977	38,378.039

PERFORMANCE		2014/15	2015/16
NI191 (kgs residual per h/h)		322	315
NI192 (Recycling Rate %)		46.3%	45.6%
NI193 (% MSW landfilled) ³		14.9%	5.6%
BVPI 84a (kgs waste per head) ⁴		289.9	277.4
Recycling Rate (H/H) (WCA + WDA)		61.1%	60.2%
Recycling Rate (RCs) (WDA)		87.0%	87.2%
NOTE: Recycling Centres includes non household			

WASTE GROWTH		2014/15	2015/16
TOTAL HOUSEHOLD (WCA)		0.7%	-2.0%
TOTAL HOUSEHOLD (WDA)		8.7%	-7.8%
TOTAL HOUSEHOLD (WCA+WDA)		3.5%	-4.2%

POPULATION	134,898	138,141
DWELLING STOCK	65,180	66,220

¹ LACW - Local Authority Collected Waste

² ERF input: Includes IBA. Includes Healthcare Waste (incinerated). Est.

³ NI193 for information only. WDA & UA Indicator. MSW=LACW.

⁴ Indicative figure for DASWC only - Includes reuse.

Agenda Item 4

EXETER 2015/16

Status: FINAL

Data Source: Statistics Payments and Recharges (SPR). National Statistics available from WasteDataFlow: www.wastedataflow.org

RECYCLED (Household Waste)		2014/15	2015/16
Glass	Bring Bank	2044.230	2075.900
	Kerbside	85.180	41.360
	Third Parties	44.220	19.860
	Recycling Centres	240.100	263.952
	Sub total	2413.730	2401.072
Paper	Bring Bank	167.040	154.200
	Kerbside	3521.880	4629.920
	Third Parties	398.795	385.460
	Recycling Centres	92.240	95.952
	Sub total	4179.955	5265.532
Card	Bring Bank	0.000	0.000
	Kerbside	1172.010	0.000
	Third Parties	16.140	0.000
	Recycling Centres	737.120	804.376
	Sub total	1925.270	804.376
Textiles	Bring Bank	56.772	66.028
	Kerbside	7.520	7.940
	Third Parties	286.438	64.350
	Recycling Centres	146.200	132.246
	Sub total	496.930	270.564
Plastic	Bring Bank	0.000	0.000
	Kerbside	1487.760	1022.530
	Third Parties	3.040	0.000
	Recycling Centres	210.367	202.215
	Sub total	1701.167	1224.745
WEEE	Bring Bank	0.000	0.000
	Kerbside	5.940	9.045
	Third Parties	0.000	0.000
	Recycling Centres	1367.459	1343.701
	Sub total	1373.399	1352.746
Organic	Food Waste	0.000	0.000
	Garden Waste	2478.500	2469.380
	Leaf Sweeping	308.480	201.010
	Third Parties	0.000	0.000
	Recycling Centres	4975.305	4322.300
	Sub total	7762.285	6992.690
Other	Bring Bank	73.992	6.450
	Kerbside	446.770	499.270
	Third Parties	211.374	152.545
	Recycling Centres	6168.852	5894.662
	Sub total	6900.988	6552.927
SUB TOTALS	Bring Bank	2342.034	2302.578
	Kerbside	6727.060	6210.065
	Third Parties	960.007	622.215
	Green Waste (WCA)	2786.980	2670.390
	TOTAL WCA	12816.081	11805.248
	TOTAL WDA (Recycling Centres)	13937.643	13059.404
	TOTAL HOUSEHOLD RECYCLED	26753.724	24864.652

RECYCLED (Non Household Waste)		2014/15	2015/16
WCA	TRADE	405.900	495.550
	Fly Tipped	0.000	1.260
	Other	0.000	0.540
	TOTAL WCA	405.900	497.350
WDA	TRADE	45.275	55.000
	Soil & Rubble	1665.560	1008.942
	Plasterboard	165.860	101.516
	IBA (Recovery)	327.900	527.758
	Other	0.053	4.238
TOTAL WDA	2204.648	1697.454	
TOTAL NON H/H RECYCLED	2610.548	2194.804	

NON RECYCLED (Household Waste)		2014/15	2015/16
Dustbin		22854.920	21123.370
MRF (Reject)		784.087	979.984
Bulky Collection		0.000	0.000
Healthcare (incinerated. Inc IBA)		141.802	110.888
Street Cleansing		1301.940	1458.760
IVC (Reject)		0.000	0.000
Other		0.000	0.000
TOTAL WCA		25082.749	23673.002
Recycling Centres		895.876	566.728
Recycling Centres - ERF		2181.950	2236.300
TOTAL WDA		3077.826	2803.028
TOTAL NON RECYCLED (WCA+WDA)		28160.575	26476.030

NON RECYCLED (Non Household Waste)		2014/15	2015/16
TRADE - Commercial & Industrial		2141.026	2252.620
TRADE - Construction & Demolition		0.000	0.000
TOTAL WCA - TRADE		2141.026	2252.620
Fly Tipped		0.578	14.700
Other (Non Household)		0.000	6.071
TOTAL WCA - OTHER		0.578	20.771
Recycling Centre (WDA)		0.000	0.000
TOTAL NON RECYCLED (WCA+WDA)		2141.604	2273.391

SUMMARY - HOUSEHOLD WASTE		2014/15	2015/16
RECYCLED (WCA)		10,029.101	9,134.858
COMPOSTED (WCA)		2,786.980	2,670.390
TOTAL (REC & COMP) (WCA)		12,816.081	11,805.248
TOTAL (NON RECYCLED) (WCA)		25,082.749	23,673.002
TOTAL HOUSEHOLD (WCA)		37,898.830	35,478.250
TOTAL HOUSEHOLD (WDA)		17,015.469	15,862.432
TOTAL HOUSEHOLD (WCA+WDA)		54,914.299	51,340.682
TOTAL NON HOUSEHOLD (WCA)		2,547.504	2,770.741

SUMMARY - WCA LACW ¹		2014/15	2015/16
TOTAL (REC & COMP) (WCA)		13,221.981	12,302.598
LANDFILL (WCA)		5,115.961	1,230.071
ENERGY RECOVERY (ERF)² (WCA)		22,108.392	24,716.322
TOTAL (NON RECYCLED) (WCA)		27,224.353	25,946.393
TOTAL LACW (WCA)		40,446.334	38,248.991

PERFORMANCE		2014/15	2015/16
NI191 (kgs residual per h/h)		468	435
NI192 (Recycling Rate %)		33.8%	33.3%
NI193 (% MSW landfilled) ³		12.6%	3.2%
BVPI 84a (kgs waste per head) ⁴		311.2	278.7
Recycling Rate (H/H) (WCA + WDA)		48.7%	48.4%
Recycling Rate (RCs) (WDA)		83.7%	83.5%
<i>NOTE: Recycling Centres includes non household</i>			

WASTE GROWTH		2014/15	2015/16
TOTAL HOUSEHOLD (WCA)		2.0%	-6.4%
TOTAL HOUSEHOLD (WDA)		5.8%	-6.8%
TOTAL HOUSEHOLD (WCA+WDA)		3.2%	-6.5%

POPULATION		121,800	127,308
DWELLING STOCK		53,570	54,400

¹ LACW - Local Authority Collected Waste

² ERF input: Includes IBA. Includes Healthcare Waste (incinerated). Est.

³ NI193 for information only. WDA & UA Indicator. MSW=LACW.

⁴ Indicative figure for DASWC only - Includes reuse.

Agenda Item 4

MID DEVON	2015/16
-----------	---------

Status:	FINAL
---------	-------

Data Source: Statistics Payments and Recharges (SPR). National Statistics available from WasteDataFlow: www.wastedataflow.org

RECYCLED (Household Waste)			
		2014/15	2015/16
Glass	Bring Bank	137.858	126.600
	Kerbside	1792.282	1973.780
	Third Parties	0.000	0.000
	Recycling Centres	63.240	62.504
	Sub total	1993.380	2162.884
Paper	Bring Bank	80.778	78.430
	Kerbside	1747.810	2650.700
	Third Parties	53.967	47.844
	Recycling Centres	61.090	59.460
	Sub total	1943.645	2836.434
Card	Bring Bank	0.000	0.000
	Kerbside	0.000	0.000
	Third Parties	0.000	0.000
	Recycling Centres	275.340	280.824
	Sub total	275.340	280.824
Textiles	Bring Bank	16.307	10.706
	Kerbside	41.487	63.434
	Third Parties	81.614	15.850
	Recycling Centres	44.380	39.928
	Sub total	183.788	129.918
Plastic	Bring Bank	0.000	0.000
	Kerbside	127.910	403.175
	Third Parties	19.218	15.659
	Recycling Centres	139.636	120.550
	Sub total	286.764	539.384
WEEE	Bring Bank	14.450	0.000
	Kerbside	17.257	26.836
	Third Parties	0.000	0.000
	Recycling Centres	609.000	618.453
	Sub total	640.707	645.289
Organic	Food Waste	0.000	0.000
	Garden Waste	9612.711	8026.36
	Leaf Sweeping	251.06	620.28
	Third Parties	567.643	726.034
	Recycling Centres	1315.145	1268.885
	Sub total	11746.559	10641.559
Other	Bring Bank	6.260	4.500
	Kerbside	359.235	375.365
	Third Parties	0.000	70.512
	Recycling Centres	2002.261	1946.724
	Sub total	2367.756	2397.101
SUB TOTALS	Bring Bank	255.653	220.236
	Kerbside	4085.981	5493.290
	Third Parties	722.442	875.899
	Green Waste (WCA)	9863.771	8646.640
	TOTAL WCA	14927.847	15236.065
	TOTAL WDA (Recycling Centres)	4510.092	4397.328
TOTAL HOUSEHOLD RECYCLED	19437.939	19633.393	

RECYCLED (Non Household Waste)			
		2014/15	2015/16
WCA	TRADE	93.942	131.320
	Fly Tipped	1.050	1.818
	Other	0.000	0.000
	TOTAL WCA	94.992	133.138
WDA	TRADE	0.875	0.825
	Soil & Rubble	392.000	273.110
	Plasterboard	54.800	58.396
	IBA (Recovery)	44.426	72.528
	Other	0.000	0.858
	TOTAL WDA	492.101	405.717
TOTAL NON H/H RECYCLED		587.093	538.855

NON RECYCLED (Household Waste)			
		2014/15	2015/16
Dustbin		14991.920	13895.870
MRF (Reject)		0.000	0.000
Bulky Collection		80.201	71.800
Healthcare (incinerated. Inc IBA)		53.574	54.510
Street Cleansing		895.920	741.710
IVC (Reject)		0.000	16.920
Other		0.000	0.000
TOTAL WCA		16021.615	14780.810
Recycling Centres		703.085	1113.749
Recycling Centres - ERF		377.830	71.900
TOTAL WDA		1080.915	1185.649
TOTAL NON RECYCLED (WCA+WDA)		17102.530	15966.459

NON RECYCLED (Non Household Waste)			
		2014/15	2015/16
TRADE - Commercial & Industrial		2454.560	3301.600
TRADE - Construction & Demolition		54.480	106.110
TOTAL WCA - TRADE		2509.040	3407.710
Fly Tipped		8.320	6.240
Other (Non Household)		28.840	27.400
TOTAL WCA - OTHER		37.160	33.640
Recycling Centre (WDA)		10.140	
TOTAL NON RECYCLED (WCA+WDA)		2556.340	3441.350

SUMMARY - HOUSEHOLD WASTE			
		2014/15	2015/16
RECYCLED (WCA)		4,496.433	5,863.391
COMPOSTED (WCA)		10,431.414	9,372.674
TOTAL (REC & COMP) (WCA)		14,927.847	15,236.065
TOTAL (NON RECYCLED) (WCA)		16,021.615	14,780.810
TOTAL HOUSEHOLD (WCA)		30,949.462	30,016.875
TOTAL HOUSEHOLD (WDA)		5,591.007	5,582.977
TOTAL HOUSEHOLD (WCA+WDA)		36,540.469	35,599.852

TOTAL NON HOUSEHOLD (WCA)	2,641.192	3,574.488
---------------------------	-----------	-----------

SUMMARY - WCA LACW ¹			
		2014/15	2015/16
TOTAL (REC & COMP) (WCA)		15,022.839	15,369.203
LANDFILL (WCA)		15,695.261	15,128.220
ENERGY RECOVERY (ERF) ² (WCA)		2,872.554	3,093.940
TOTAL (NON RECYCLED) (WCA)		18,567.815	18,222.160
TOTAL LACW (WCA)		33,590.654	33,591.363

PERFORMANCE			
		2014/15	2015/16
NI191 (kgs residual per h/h)		463	423
NI192 (Recycling Rate %)		48.2%	50.8%
NI193 (% MSW landfilled) ³		46.7%	45.0%
BVPI 84a (kgs waste per head) ⁴		393.4	377.5
Recycling Rate (H/H) (WCA + WDA)		53.2%	55.2%
Recycling Rate (RCs) (WDA)		82.0%	80.0%
NOTE: Recycling Centres includes non household			

WASTE GROWTH			
		2014/15	2015/16
TOTAL HOUSEHOLD (WCA)		-0.5%	-3.0%
TOTAL HOUSEHOLD (WDA)		2.6%	-0.1%
TOTAL HOUSEHOLD (WCA+WDA)		0.0%	-2.6%

POPULATION	78,670	79,510
DWELLING STOCK	34,640	34,940

¹ LACW - Local Authority Collected Waste

² ERF input: Includes IBA. Includes Healthcare Waste (incinerated). Est.

³ NI193 for information only. WDA & UA Indicator. MSW=LACW.

⁴ Indicative figure for DASWC only - Includes reuse.

Agenda Item 4

NORTH DEVON 2015/16

Status: **FINAL**

Data Source: Statistics Payments and Recharges (SPR). National Statistics available from WasteDataFlow: www.wastedataflow.org

RECYCLED (Household Waste)		2014/15	2015/16
Glass	Bring Bank	94.163	86.940
	Kerbside	2449.187	2702.950
	Third Parties	32.849	8.186
	Recycling Centres	76.685	80.236
	Sub total	2652.884	2878.312
Paper	Bring Bank	56.675	40.950
	Kerbside	2535.040	3756.850
	Third Parties	34.902	32.129
	Recycling Centres	94.055	97.496
	Sub total	2720.672	3927.425
Card	Bring Bank	0.000	0.000
	Kerbside	1223.200	0.000
	Third Parties	9.664	2.408
	Recycling Centres	388.665	468.759
	Sub total	1621.529	471.167
Textiles	Bring Bank	1.753	0.193
	Kerbside	54.640	44.730
	Third Parties	124.074	0.000
	Recycling Centres	82.930	80.141
	Sub total	263.397	125.064
Plastic	Bring Bank	0.000	0.000
	Kerbside	508.540	644.920
	Third Parties	2.282	0.619
	Recycling Centres	69.307	193.353
	Sub total	580.129	838.892
WEEE	Bring Bank	22.169	0.000
	Kerbside	20.610	12.195
	Third Parties	0.000	0.000
	Recycling Centres	989.128	982.156
	Sub total	1031.907	994.351
Organic	Food Waste	0.000	0.000
	Garden Waste	9877.591	9676.217
	Leaf Sweeping	0.000	396.940
	Third Parties	225.937	185.920
	Recycling Centres	1553.495	1371.700
Sub total	11657.023	11630.777	
Other	Bring Bank	4.170	2.809
	Kerbside	397.073	384.189
	Third Parties	144.360	120.518
	Recycling Centres	3453.439	3516.198
	Sub total	3999.042	4023.714
SUB TOTALS	Bring Bank	178.930	130.892
	Kerbside	7188.290	7545.834
	Third Parties	574.068	349.780
	Green Waste (WCA)	9877.591	10073.157
	TOTAL WCA	17818.879	18099.663
TOTAL WDA (Recycling Centres)	6707.704	6790.039	
TOTAL HOUSEHOLD RECYCLED	24526.583	24889.702	

RECYCLED (Non Household Waste)		2014/15	2015/16
WCA	TRADE	224.003	320.742
	Fly Tipped	0.000	0.000
	Other	0.000	0.000
	TOTAL WCA	224.003	320.742
WDA	TRADE	8.025	12.900
	Soil & Rubble	553.330	401.490
	Plasterboard	109.080	108.164
	IBA (Recovery)	0.000	0.000
	Other	0.235	4.340
	TOTAL WDA	670.670	526.894
TOTAL NON H/H RECYCLED	894.673	847.636	

NON RECYCLED (Household Waste)		2014/15	2015/16
Dustbin		21645.342	22113.120
MRF (Reject)		0.000	0.000
Bulky Collection		0.000	0.000
Healthcare (incinerated. Inc IBA)		77.909	90.586
Street Cleansing		734.780	26.260
IVC (Reject)		7.448	4.938
Other		0.000	0.000
TOTAL WCA	22465.479	22234.904	
Recycling Centres		2280.800	2207.146
Recycling Centres - ERF		0.000	0.000
TOTAL WDA	2280.800	2207.146	
TOTAL NON RECYCLED (WCA+WDA)	24746.279	24442.050	

NON RECYCLED (Non Household Waste)		2014/15	2015/16
TRADE - Commercial & Industrial		3501.018	3584.000
TRADE - Construction & Demolition		0.000	0.000
TOTAL WCA - TRADE	3501.018	3584.000	
Fly Tipped		0.000	0.000
Other (Non Household)		0.000	0.000
TOTAL WCA - OTHER	0.000	0.000	
Recycling Centre (WDA)			
TOTAL NON RECYCLED (WCA+WDA)	3501.018	3584.000	

SUMMARY - HOUSEHOLD WASTE		2014/15	2015/16
RECYCLED (WCA)		7,715.351	7,840.586
COMPOSTED (WCA)		10,103.528	10,259.077
TOTAL (REC & COMP) (WCA)	17,818.879	18,099.663	
TOTAL (NON RECYCLED) (WCA)	22,465.479	22,234.904	
TOTAL HOUSEHOLD (WCA)	40,284.358	40,334.567	
TOTAL HOUSEHOLD (WDA)	8,988.504	8,997.185	
TOTAL HOUSEHOLD (WCA+WDA)	49,272.862	49,331.752	

TOTAL NON HOUSEHOLD (WCA)	3,725.021	3,904.742
----------------------------------	------------------	------------------

SUMMARY - WCA LACW ¹		2014/15	2015/16
TOTAL (REC & COMP) (WCA)		18,042.882	18,420.405
LANDFILL (WCA)		25,888.588	25,728.318
ENERGY RECOVERY (ERF) ² (WCA)		77.909	90.586
TOTAL (NON RECYCLED) (WCA)	25,966.497	25,818.904	
TOTAL LACW (WCA)	44,009.379	44,239.309	

PERFORMANCE		2014/15	2015/16
NI191 (kgs residual per h/h)		509	501
NI192 (Recycling Rate %)	44.2%	44.9%	
NI193 (% MSW landfilled) ³		58.8%	58.2%
BVPI 84a (kgs waste per head) ⁴		429.4	428.3
Recycling Rate (H/H) (WCA + WDA)		49.8%	50.5%
Recycling Rate (RCs) (WDA)		76.4%	76.8%
<i>NOTE: Recycling Centres includes non household</i>			

WASTE GROWTH		2014/15	2015/16
TOTAL HOUSEHOLD (WCA)		0.3%	0.1%
TOTAL HOUSEHOLD (WDA)		3.7%	0.1%
TOTAL HOUSEHOLD (WCA+WDA)	0.9%	0.1%	

POPULATION		93,825	94,172
DWELLING STOCK		44,110	44,340

¹ LACW - Local Authority Collected Waste

² ERF input: Includes IBA. Includes Healthcare Waste (incinerated). Est.

³ NI193 for information only. WDA & UA Indicator. MSW=LACW.

⁴ Indicative figure for DASWC only - Includes reuse.

Agenda Item 4

SOUTH HAMS 2015/16

Status: FINAL

Data Source: Statistics Payments and Recharges (SPR). National Statistics available from WasteDataFlow: www.wastedataflow.org

		2014/15	2015/16
RECYCLED (Household Waste)			
Glass	Bring Bank	2236.600	2186.200
	Kerbside	0.000	0.000
	Third Parties	0.000	0.000
	Recycling Centres	157.680	177.104
	Sub total	2394.280	2363.304
Paper	Bring Bank	166.030	149.180
	Kerbside	4267.210	4439.660
	Third Parties	60.010	38.756
	Recycling Centres	18.000	19.760
	Sub total	4511.250	4647.356
Card	Bring Bank	0.000	0.000
	Kerbside	0.000	0.000
	Third Parties	0.000	0.000
	Recycling Centres	463.620	496.552
	Sub total	463.620	496.552
Textiles	Bring Bank	74.560	66.190
	Kerbside	0.000	0.000
	Third Parties	115.670	13.905
	Recycling Centres	78.090	57.394
	Sub total	268.320	137.489
Plastic	Bring Bank	0.000	0.000
	Kerbside	317.810	463.880
	Third Parties	0.000	0.000
	Recycling Centres	64.117	76.726
	Sub total	381.927	540.606
WEEE	Bring Bank	0.000	0.000
	Kerbside	3.920	4.815
	Third Parties	0.000	0.000
	Recycling Centres	861.337	892.323
	Sub total	865.257	897.138
Organic	Food Waste	0.000	0.000
	Garden Waste	9573.918	9756.980
	Leaf Sweeping	651.080	418.520
	Third Parties	225.190	234.259
	Recycling Centres	1932.600	1725.130
Sub total	12382.788	12134.889	
Other	Bring Bank	32.230	16.530
	Kerbside	514.810	335.920
	Third Parties	233.340	201.348
	Recycling Centres	3127.144	3011.010
	Sub total	3907.524	3564.808
SUB TOTALS	Bring Bank	2509.420	2418.100
	Kerbside	5103.750	5244.275
	Third Parties	634.210	488.268
	Green Waste (WCA)	10224.998	10175.500
	TOTAL WCA	18472.378	18326.143
TOTAL WDA (Recycling Centres)	6702.588	6455.999	
TOTAL HOUSEHOLD RECYCLED	25174.966	24782.142	

		2014/15	2015/16
RECYCLED (Non Household Waste)			
WCA	TRADE	429.580	460.820
	Fly Tipped	0.000	0.000
	Other	0.000	0.000
	TOTAL WCA	429.580	460.820
WDA	TRADE	0.500	7.000
	Soil & Rubble	338.060	266.471
	Plasterboard	17.380	25.880
	IBA (Recovery)	38.114	0.000
	Other	0.000	0.000
	TOTAL WDA	394.054	299.351
TOTAL NON H/H RECYCLED	823.634	760.171	

		2014/15	2015/16
NON RECYCLED (Household Waste)			
Dustbin		16048.160	16068.066
MRF (Reject)		28.480	66.840
Bulky Collection		0.000	0.000
Healthcare (incinerated, Inc IBA)		56.390	61.031
Street Cleansing		0.000	0.000
IVC (Reject)		184.030	80.467
Other		0.000	0.000
TOTAL WCA	16317.060	16276.404	
Recycling Centres		2222.078	224.143
Recycling Centres - ERF		18.480	1830.220
TOTAL WDA	2240.558	2054.363	
TOTAL NON RECYCLED (WCA+WDA)	18557.618	18330.767	

		2014/15	2015/16
NON RECYCLED (Non Household Waste)			
TRADE - Commercial & Industrial		2626.890	2597.545
TRADE - Construction & Demolition		0.000	0.000
TOTAL WCA - TRADE	2626.890	2597.545	
Fly Tipped		48.800	2.860
Other (Non Household)		0.000	0.000
TOTAL WCA - OTHER	48.800	2.860	
Recycling Centre (WDA)		6.500	
TOTAL NON RECYCLED (WCA+WDA)	2682.190	2600.405	

		2014/15	2015/16
SUMMARY - HOUSEHOLD WASTE			
RECYCLED (WCA)		8,022.190	7,916.384
COMPOSTED (WCA)		10,450.188	10,409.759
TOTAL (REC & COMP) (WCA)	18,472.378	18,326.143	
TOTAL (NON RECYCLED) (WCA)	16,317.060	16,276.404	
TOTAL HOUSEHOLD (WCA)	34,789.438	34,602.547	
TOTAL HOUSEHOLD (WDA)	8,943.146	8,510.362	
TOTAL HOUSEHOLD (WCA+WDA)	43,732.584	43,112.909	

TOTAL NON HOUSEHOLD (WCA)	3,105.270	3,061.225
----------------------------------	------------------	------------------

		2014/15	2015/16
SUMMARY - WCA LACW¹			
TOTAL (REC & COMP) (WCA)	18,901.958	18,786.963	
LANDFILL (WCA)		16,002.580	1,471.321
ENERGY RECOVERY (ERF) ² (WCA)		2,990.170	17,405.488
TOTAL (NON RECYCLED) (WCA)	18,992.750	18,876.809	
TOTAL LACW (WCA)	37,894.708	37,663.772	

		2014/15	2015/16
PERFORMANCE			
NI191 (kgs residual per h/h)		380	377
NI192 (Recycling Rate %)	53.1%	53.0%	
NI193 (% MSW landfilled) ³		42.2%	3.9%
BVPI 84a (kgs waste per head) ⁴		414.9	409.6
Recycling Rate (H/H) (WCA + WDA)		57.6%	57.5%
Recycling Rate (RCs) (WDA)		75.9%	76.7%
<i>NOTE: Recycling Centres includes non household</i>			

		2014/15	2015/16
WASTE GROWTH			
TOTAL HOUSEHOLD (WCA)		-2.0%	-0.5%
TOTAL HOUSEHOLD (WDA)		4.8%	-4.8%
TOTAL HOUSEHOLD (WCA+WDA)	-0.7%	-1.4%	

POPULATION	83,850	84,470
DWELLING STOCK	42,980	43,210

¹ LACW - Local Authority Collected Waste

² ERF input: Includes IBA. Includes Healthcare Waste (incinerated). Est.

³ NI193 for information only. WDA & UA Indicator. MSW=LACW.

⁴ Indicative figure for DASWC only - Includes reuse.

Agenda Item 4

TEIGNBRIDGE 2015/16

Status: **FINAL**

Data Source: Statistics Payments and Recharges (SPR). National Statistics available from WasteDataFlow: www.wastedataflow.org

RECYCLED (Household Waste)		2014/15	2015/16
Glass	Bring Bank	802.548	733.209
	Kerbside	3081.292	3347.837
	Third Parties	0.000	0.000
	Recycling Centres	36.760	31.792
	Sub total	3920.600	4112.838
Paper	Bring Bank	491.064	555.370
	Kerbside	2510.636	3696.008
	Third Parties	119.153	71.308
	Recycling Centres	62.540	64.148
	Sub total	3183.393	4386.834
Card	Bring Bank	238.215	389.090
	Kerbside	0.000	0.000
	Third Parties	0.305	0.040
	Recycling Centres	509.100	500.020
	Sub total	747.620	889.150
Textiles	Bring Bank	103.984	133.318
	Kerbside	36.721	53.879
	Third Parties	173.771	0.000
	Recycling Centres	79.680	63.436
	Sub total	394.156	250.633
Plastic	Bring Bank	187.551	153.972
	Kerbside	604.274	993.887
	Third Parties	0.000	0.000
	Recycling Centres	88.540	86.672
	Sub total	880.365	1234.531
WEEE	Bring Bank	8.600	0.000
	Kerbside	22.951	29.807
	Third Parties	0.000	0.000
	Recycling Centres	1068.789	922.297
	Sub total	1100.340	952.104
Organic	Food Waste	0.000	1136.076
	Garden Waste	15227.679	13028.767
	Leaf Sweeping	1339.510	1142.070
	Third Parties	50.743	36.175
	Recycling Centres	4436.330	2962.055
	Sub total	21054.262	18305.143
Other	Bring Bank	150.273	140.455
	Kerbside	650.134	554.767
	Third Parties	109.878	117.171
	Recycling Centres	4375.412	3843.339
	Sub total	5285.697	4655.732
SUB TOTALS	Bring Bank	1982.235	2105.414
	Kerbside	6906.008	8676.185
	Third Parties	453.850	224.694
	Green Waste (WCA)	16567.189	15306.913
	TOTAL WCA	25909.282	26313.206
TOTAL WDA (Recycling Centres)	10657.151	8473.759	
TOTAL HOUSEHOLD RECYCLED	36566.433	34786.965	

RECYCLED (Non Household Waste)		2014/15	2015/16
WCA	TRADE	46.884	21.376
	Fly Tipped	22.998	9.170
	Other	0.000	0.000
	TOTAL WCA	69.882	30.546
WDA	TRADE	33.250	47.375
	Soil & Rubble	671.280	402.268
	Plasterboard	84.540	48.348
	IBA (Recovery)	44.820	35.287
	Other	0.000	0.000
	TOTAL WDA	833.890	533.278
TOTAL NON H/H RECYCLED	903.772	563.824	

NON RECYCLED (Household Waste)		2014/15	2015/16
Dustbin		21003.032	20050.909
MRF (Reject)		0.000	0.000
Bulky Collection		118.100	21.100
Healthcare (incinerated. Inc IBA)		125.107	135.750
Street Cleansing		1123.460	1776.410
IVC (Reject)		0.000	153.735
Other		0.000	0.000
TOTAL WCA		22369.699	22137.904
Recycling Centres		2978.216	206.320
Recycling Centres - ERF		154.460	2057.640
TOTAL WDA		3132.676	2263.960
TOTAL NON RECYCLED (WCA+WDA)		25502.375	24401.864

NON RECYCLED (Non Household Waste)		2014/15	2015/16
TRADE - Commercial & Industrial		338.948	364.728
TRADE - Construction & Demolition		0.000	0.000
TOTAL WCA - TRADE		338.948	364.728
Fly Tipped		419.440	508.520
Other (Non Household)		182.600	182.600
TOTAL WCA - OTHER		602.040	691.120
Recycling Centre (WDA)		39.780	
TOTAL NON RECYCLED (WCA+WDA)		980.768	1055.848

SUMMARY - HOUSEHOLD WASTE		2014/15	2015/16
RECYCLED (WCA)		9,291,350	10,970,118
COMPOSTED (WCA)		16,617,932	15,343,088
TOTAL (REC & COMP) (WCA)		25,909,282	26,313,206
TOTAL (NON RECYCLED) (WCA)		22,369,699	22,137,904
TOTAL HOUSEHOLD (WCA)		48,278,981	48,451,110
TOTAL HOUSEHOLD (WDA)		13,789,827	10,737,719
TOTAL HOUSEHOLD (WCA+WDA)		62,068,808	59,188,829

TOTAL NON HOUSEHOLD (WCA)	1,010,870	1,086,394
----------------------------------	-----------	-----------

SUMMARY - WCA LACW ¹		2014/15	2015/16
TOTAL (REC & COMP) (WCA)		25,979,164	26,343,752
LANDFILL (WCA)		19,882,280	2,923,355
ENERGY RECOVERY (ERF) ² (WCA)		3,428,407	20,270,397
TOTAL (NON RECYCLED) (WCA)		23,310,687	23,193,752
TOTAL LACW (WCA)		49,289,851	49,537,504

PERFORMANCE		2014/15	2015/16
NI191 (kgs residual per h/h)		377	369
NI192 (Recycling Rate %)		53.7%	54.3%
NI193 (% MSW landfilled) ³		40.3%	5.9%
BVPI 84a (kgs waste per head) ⁴		383.2	376.1
Recycling Rate (H/H) (WCA + WDA)		58.9%	58.8%
Recycling Rate (RCs) (WDA)		78.3%	79.9%
<i>NOTE: Recycling Centres includes non household</i>			

WASTE GROWTH		2014/15	2015/16
TOTAL HOUSEHOLD (WCA)		0.5%	0.4%
TOTAL HOUSEHOLD (WDA)		2.5%	-22.1%
TOTAL HOUSEHOLD (WCA+WDA)		1.0%	-4.6%

POPULATION	126,001	128,826
DWELLING STOCK	59,310	60,030

¹ LACW - Local Authority Collected Waste

² ERF input: Includes IBA. Includes Healthcare Waste (incinerated). Est.

³ NI193 for information only. WDA & UA Indicator. MSW=LACW.

⁴ Indicative figure for DASWC only - Includes reuse.

Agenda Item 4

TORRIDGE 2015/16

Status: **FINAL**

Data Source: Statistics Payments and Recharges (SPR). National Statistics available from WasteDataFlow: www.wastedataflow.org

RECYCLED (Household Waste)		2014/15	2015/16
Glass	Bring Bank	90.285	107.945
	Kerbside	1804.970	1212.495
	Third Parties	0.000	0.000
	Recycling Centres	70.920	85.720
	Sub total	1966.175	1406.160
Paper	Bring Bank	73.495	84.720
	Kerbside	1677.388	386.664
	Third Parties	16.168	13.537
	Recycling Centres	86.100	97.660
	Sub total	1853.151	582.581
Card	Bring Bank	0.240	0.000
	Kerbside	708.209	173.878
	Third Parties	3.667	5.269
	Recycling Centres	311.480	334.964
	Sub total	1023.596	514.111
Textiles	Bring Bank	15.350	13.173
	Kerbside	39.182	9.875
	Third Parties	22.670	9.200
	Recycling Centres	49.697	49.462
	Sub total	126.899	81.710
Plastic	Bring Bank	0.340	0.175
	Kerbside	394.442	115.996
	Third Parties	1.585	1.420
	Recycling Centres	66.518	141.400
	Sub total	462.885	258.991
WEEE	Bring Bank	0.000	0.000
	Kerbside	65.111	23.416
	Third Parties	0.000	0.000
	Recycling Centres	615.744	670.497
	Sub total	680.855	693.913
Organic	Food Waste	0.000	0.000
	Garden Waste	6593.429	6457.300
	Leaf Sweeping	570.800	269.520
	Third Parties	0.000	0.000
	Recycling Centres	1106.705	1008.525
Sub total	8270.934	7735.345	
Other	Bring Bank	15.213	7.374
	Kerbside	280.747	2614.003
	Third Parties	33.430	29.768
	Recycling Centres	2265.746	2167.357
	Sub total	2595.136	4818.502
SUB TOTALS	Bring Bank	194.923	213.387
	Kerbside	4970.049	4536.327
	Third Parties	77.520	59.194
	Green Waste (WCA)	7164.229	6726.820
	TOTAL WCA	12406.721	11535.728
TOTAL WDA (Recycling Centres)	4572.910	4555.585	
TOTAL HOUSEHOLD RECYCLED	16979.631	16091.313	

RECYCLED (Non Household Waste)		2014/15	2015/16
WCA	TRADE	0.000	0.000
	Fly Tipped	0.676	0.634
	Other	0.000	0.000
	TOTAL WCA	0.676	0.634
WDA	TRADE	5.475	5.175
	Soil & Rubble	271.049	172.846
	Plasterboard	67.029	56.356
	IBA (Recovery)	0.102	0.000
	Other	0.000	0.000
TOTAL WDA	343.655	234.377	
TOTAL NON H/H RECYCLED	344.331	235.011	

NON RECYCLED (Household Waste)		2014/15	2015/16
Dustbin		14717.345	15217.013
MRF (Reject)		0.000	0.000
Bulky Collection		0.000	0.000
Healthcare (incinerated. Inc IBA)		32.889	41.241
Street Cleansing		417.980	413.240
IVC (Reject)		0.000	3.362
Other		0.000	0.000
TOTAL WCA		15168.214	15674.856
Recycling Centres		1090.343	1008.068
Recycling Centres - ERF		6.440	0.000
TOTAL WDA		1096.783	1008.068
TOTAL NON RECYCLED (WCA+WDA)		16264.997	16682.924

NON RECYCLED (Non Household Waste)		2014/15	2015/16
TRADE - Commercial & Industrial		1.280	4.480
TRADE - Construction & Demolition		0.000	0.000
TOTAL WCA - TRADE		1.280	4.480
Fly Tipped		5.560	12.809
Other (Non Household)		0.000	0.000
TOTAL WCA - OTHER		5.560	12.809
Recycling Centre (WDA)		18.000	2.200
TOTAL NON RECYCLED (WCA+WDA)		24.840	19.489

SUMMARY - HOUSEHOLD WASTE		2014/15	2015/16
RECYCLED (WCA)		5,242.492	4,808.908
COMPOSTED (WCA)		7,164.229	6,726.820
TOTAL (REC & COMP) (WCA)		12,406.721	11,535.728
TOTAL (NON RECYCLED) (WCA)		15,168.214	15,674.856
TOTAL HOUSEHOLD (WCA)		27,574.935	27,210.584
TOTAL HOUSEHOLD (WDA)		5,669.693	5,563.653
TOTAL HOUSEHOLD (WCA+WDA)		33,244.628	32,774.237

TOTAL NON HOUSEHOLD (WCA)	7.516	17.923
----------------------------------	--------------	---------------

SUMMARY - WCA LACW ¹		2014/15	2015/16
TOTAL (REC & COMP) (WCA)		12,407.397	11,536.362
LANDFILL (WCA)		15,142.165	15,063.574
ENERGY RECOVERY (ERF) ² (WCA)		32.889	628.571
TOTAL (NON RECYCLED) (WCA)		15,175.054	15,692.145
TOTAL LACW (WCA)		27,582.451	27,228.507

PERFORMANCE	2014/15	2015/16
NI191 (kgs residual per h/h)	489	498
NI192 (Recycling Rate %)	45.0%	42.4%
NI193 (% MSW landfilled) ³	54.9%	55.3%
BVPI 84a (kgs waste per head) ⁴	423.6	410.6
Recycling Rate (H/H) (WCA + WDA)	51.1%	49.1%
Recycling Rate (RCs) (WDA)	81.5%	82.6%

NOTE: Recycling Centres includes non household

WASTE GROWTH	2014/15	2015/16
TOTAL HOUSEHOLD (WCA)	2.8%	-1.3%
TOTAL HOUSEHOLD (WDA)	3.4%	-1.9%
TOTAL HOUSEHOLD (WCA+WDA)	2.9%	-1.4%

POPULATION	65,089	66,265
DWELLING STOCK	31,020	31,480

¹ LACW - Local Authority Collected Waste

² ERF input: Includes IBA. Includes Healthcare Waste (incinerated). Est.

³ NI193 for information only. WDA & UA Indicator. MSW=LACW.

⁴ Indicative figure for DASWC only - Includes reuse.

Agenda Item 4

WEST DEVON 2015/16

Status: FINAL

Data Source: Statistics Payments and Recharges (SPR). National Statistics available from WasteDataFlow: www.wastedataflow.org

RECYCLED (Household Waste)		2014/15	2015/16
Glass	Bring Bank	211.220	203.450
	Kerbside	1632.780	1591.450
	Third Parties	0.400	0.000
	Recycling Centres	42.540	42.384
	Sub total	1886.940	1837.284
Paper	Bring Bank	104.220	132.440
	Kerbside	2048.950	1063.880
	Third Parties	42.685	24.770
	Recycling Centres	54.780	39.400
	Sub total	2250.635	1260.490
Card	Bring Bank	0.000	0.000
	Kerbside	0.000	908.160
	Third Parties	2.949	2.878
	Recycling Centres	351.980	380.360
	Sub total	354.929	1291.398
Textiles	Bring Bank	24.254	25.553
	Kerbside	7.340	5.340
	Third Parties	38.809	9.174
	Recycling Centres	66.070	52.884
	Sub total	136.473	92.951
Plastic	Bring Bank	25.100	22.900
	Kerbside	254.610	251.920
	Third Parties	11.517	13.465
	Recycling Centres	187.923	153.887
	Sub total	479.150	442.172
WEEE	Bring Bank	0.000	0.000
	Kerbside	6.950	6.300
	Third Parties	0.000	0.000
	Recycling Centres	665.847	701.481
	Sub total	672.797	707.781
Organic	Food Waste	1645.660	1646.340
	Garden Waste	3396.225	3267.590
	Leaf Sweeping	1317.620	801.440
	Third Parties	31.599	68.738
	Recycling Centres	1995.550	1863.040
Sub total	8386.654	7647.148	
Other	Bring Bank	18.133	9.661
	Kerbside	239.620	191.382
	Third Parties	151.464	153.582
	Recycling Centres	2080.489	2166.053
	Sub total	2489.706	2520.678
SUB TOTALS	Bring Bank	382.927	394.004
	Kerbside	4190.250	4018.432
	Third Parties	279.423	272.607
	Green Waste (WCA)	6359.505	5715.370
	TOTAL WCA	11212.105	10400.413
TOTAL WDA (Recycling Centres)	5445.179	5399.489	
TOTAL HOUSEHOLD RECYCLED	16657.284	15799.902	

RECYCLED (Non Household Waste)		2014/15	2015/16
WCA	TRADE	0.000	0.000
	Fly Tipped	2.980	1.144
	Other	0.000	0.000
	TOTAL WCA	2.980	1.144
WDA	TRADE	1.450	14.300
	Soil & Rubble	354.260	274.429
	Plasterboard	77.840	72.452
	IBA (Recovery)	0.000	0.000
	Other	0.000	0.540
TOTAL WDA	433.550	361.721	
TOTAL NON H/H RECYCLED	436.530	362.865	

NON RECYCLED (Household Waste)		2014/15	2015/16
Dustbin		8333.400	8540.540
MRF (Reject)		0.000	0.000
Bulky Collection		26.660	26.360
Healthcare (incinerated. Inc IBA)		49.319	52.071
Street Cleansing		209.720	67.900
IVC (Reject)		0.000	0.000
Other		0.000	0.000
TOTAL WCA		8619.099	8686.871
Recycling Centres		1342.783	305.843
Recycling Centres - ERF		0.000	1160.480
TOTAL WDA		1342.783	1466.323
TOTAL NON RECYCLED (WCA+WDA)		9961.882	10153.194

NON RECYCLED (Non Household Waste)		2014/15	2015/16
TRADE - Commercial & Industrial		0.000	0.000
TRADE - Construction & Demolition		0.000	0.000
TOTAL WCA - TRADE		0.000	0.000
Fly Tipped		0.460	2.180
Other (Non Household)		0.000	0.000
TOTAL WCA - OTHER		0.460	2.180
Recycling Centre (WDA)		4.720	16.840
TOTAL NON RECYCLED (WCA+WDA)		5.180	19.020

SUMMARY - HOUSEHOLD WASTE		2014/15	2015/16
RECYCLED (WCA)		4,821.001	4,616.305
COMPOSTED (WCA)		6,391.104	5,784.108
TOTAL (REC & COMP) (WCA)		11,212.105	10,400.413
TOTAL (NON RECYCLED) (WCA)		8,619.099	8,686.871
TOTAL HOUSEHOLD (WCA)		19,831.204	19,087.284
TOTAL HOUSEHOLD (WDA)		6,787.962	6,865.812
TOTAL HOUSEHOLD (WCA+WDA)		26,619.166	25,953.096

TOTAL NON HOUSEHOLD (WCA)	3.440	3.324
----------------------------------	--------------	--------------

SUMMARY - WCA LACW ¹		2014/15	2015/16
TOTAL (REC & COMP) (WCA)		11,215.085	10,401.557
LANDFILL (WCA)		8,570.240	737.660
ENERGY RECOVERY (ERF) ² (WCA)		49.319	7,951.391
TOTAL (NON RECYCLED) (WCA)		8,619.559	8,689.051
TOTAL LACW (WCA)		19,834.644	19,090.608

PERFORMANCE		2014/15	2015/16
NI191 (kgs residual per h/h)		345	346
NI192 (Recycling Rate %)		56.5%	54.5%
NI193 (% MSW landfilled) ³		43.2%	3.9%
BVPI 84a (kgs waste per head) ⁴		367.8	351.0
Recycling Rate (H/H) (WCA + WDA)		62.6%	60.9%
Recycling Rate (RCs) (WDA)		81.4%	79.5%
<i>NOTE: Recycling Centres includes non household</i>			

WASTE GROWTH		2014/15	2015/16
TOTAL HOUSEHOLD (WCA)		2.1%	-3.8%
TOTAL HOUSEHOLD (WDA)		-2.7%	1.1%
TOTAL HOUSEHOLD (WCA+WDA)		0.8%	-2.5%

POPULATION	53,919	54,385
DWELLING STOCK	24,950	25,140

¹ LACW - Local Authority Collected Waste

² ERF input: Includes IBA. Includes Healthcare Waste (incinerated). Est.

³ NI193 for information only. WDA & UA Indicator. MSW=LACW.

⁴ Indicative figure for DASWC only - Includes reuse.

Agenda Item 4

TORBAY	2015/16
---------------	----------------

Status:	FINAL
---------	--------------

Data Source: Statistics Payments and Recharges (SPR). National Statistics available from WasteDataFlow: www.wastedataflow.org

RECYCLED (Household Waste)			
		2014/15	2015/16
Glass	Bring Bank	378.520	334.480
	Kerbside	3363.020	3504.520
	Third Parties	0.000	0.000
	Recycling Centres	0.000	0.000
	Sub total	3741.540	3839.000
Paper	Bring Bank	177.720	158.540
	Kerbside	3267.720	3122.070
	Third Parties	28.870	54.110
	Recycling Centres	0.000	0.000
	Sub total	3474.310	3334.720
Card	Bring Bank	0.000	0.000
	Kerbside	2716.420	3144.010
	Third Parties	0.000	0.000
	Recycling Centres	221.560	143.660
	Sub total	2937.980	3287.670
Textiles	Bring Bank	91.210	53.650
	Kerbside	60.160	88.300
	Third Parties	28.000	22.030
	Recycling Centres	7.740	3.880
	Sub total	187.110	167.860
Plastic	Bring Bank	0.000	0.000
	Kerbside	1087.190	1076.300
	Third Parties	0.000	0.000
	Recycling Centres	0.000	0.000
	Sub total	1087.190	1076.300
WEEE	Bring Bank	0.000	0.000
	Kerbside	0.000	0.000
	Third Parties	0.000	0.000
	Recycling Centres	666.030	830.310
	Sub total	666.030	830.310
Organic	Food Waste	0.000	2876.000
	Garden Waste	2774.010	0.000
	Leaf Sweeping	0.000	0.000
	Third Parties	109.490	78.360
	Recycling Centres	5485.000	6109.220
	Sub total	8368.500	9063.580
	Other		
Other	Bring Bank	0.000	0.000
	Kerbside	0.000	501.770
	Third Parties	60.650	11.580
	Recycling Centres	3041.120	3205.070
	Sub total	3101.770	3718.420
SUB TOTALS	Bring Bank	647.450	546.670
	Kerbside	10494.510	11436.970
	Third Parties	227.010	166.080
	Green Waste (Collected)	2774.010	2876.000
	TOTAL Collected	14142.980	15025.720
	TOTAL Recycling Centres	9421.450	10292.140
	TOTAL HOUSEHOLD RECYCLED	23564.430	25317.860

RECYCLED (Non Household Waste)			
		2014/15	2015/16
TRADE		1181.640	1786.040
Soil & Rubble		578.600	713.340
Plasterboard		53.860	32.760
IBA (Recovery)		0.000	0.000
Other		130.040	99.380
TOTAL UA		1944.140	2631.520

NON RECYCLED (Household Waste)			
		2014/15	2015/16
Dustbin		26646.550	27014.420
MRF (Reject)		131.080	11.730
Bulky Collection		0.000	0.000
Healthcare (incinerated. Inc IBA)		143.150	46.690
Street Cleansing		2961.860	3385.270
IVC (Reject)		0.000	0.000
Other		386.680	175.320
TOTAL Collected		30269.320	30633.430
Recycling Centres		2259.170	0.000
Recycling Centres - ERF		0.000	3491.030
TOTAL Recycling Centres		2259.170	3491.030
TOTAL NON RECYCLED (UA)		32528.490	34124.460

NON RECYCLED (Non Household Waste)			
		2014/15	2015/16
TRADE - Commercial & Industrial		0.000	0.000
TRADE - Construction & Demolition		6059.230	5340.500
TOTAL - TRADE		6059.230	5340.500
Fly Tipped		112.000	119.560
Other (Non Household)		0.000	0.000
TOTAL - OTHER		112.000	119.560
Recycling Centre		9.980	16.860
TOTAL NON RECYCLED (UA)		6181.210	5476.920

SUMMARY - HOUSEHOLD WASTE			
		2014/15	2015/16
RECYCLED		15,195.930	16,254.280
COMPOSTED		8,368.500	9,063.580
TOTAL (REC & COMP)		23,564.430	25,317.860
TOTAL (NON RECYCLED)		32,528.490	34,124.460
TOTAL HOUSEHOLD (UA)		56,092.920	59,442.320

TOTAL NON HOUSEHOLD (UA)	8,125.350	8,108.440
---------------------------------	------------------	------------------

SUMMARY - TOTAL LACW ¹			
		2014/15	2015/16
TOTAL (REC & COMP)		25,508.570	27,949.380
LANDFILL		38,566.550	3,427.290
ENERGY RECOVERY (ERF) ²		143.150	36174.090
TOTAL (NON RECYCLED)		38,709.700	39,601.380
TOTAL LACW (UA)		64,218.270	67,550.760

PERFORMANCE			
		2014/15	2015/16
NI191 (kgs residual per h/h)		496	520
NI192 (Recycling Rate %)		42.0%	42.6%
NI193 (% MSW landfilled) ³		60.1%	5.1%
BVPI 84a (kgs waste per head) ⁴		424.7	450.1
Recycling Rate (RCs) (UA)		83.4%	78.7%
<i>NOTE: Recycling Centres includes non household</i>			

WASTE GROWTH			
		2014/15	2015/16
TOTAL HOUSEHOLD (UA)		-1.4%	6.0%
TOTAL LACW (UA)		0.0%	5.2%

POPULATION			
		2014/15	2015/16
DWELLING STOCK		132,075	132,075
		65,620	65,620

¹ LACW - Local Authority Collected Waste

² ERF input: Includes IBA. Includes Healthcare Waste (incinerated). Est.

³ NI193 for information only. WDA & UA Indicator. MSW=LACW.

⁴ Indicative figure for DASWC only - Includes reuse.

⁵ UA - Unitary Authority

HCW/16/72

Devon Authorities Strategic Waste Committee
18 October 2016

Budget Out-turn for 2015/16 and 2016/17 Update

Report of the Head of Highways, Capital Development and Waste

Please note that the following recommendations are subject to consideration and determination by the Committee before taking effect

Recommendation: It is recommended that:

- (i) the unspent allocation noted in the report amounting to £28,032 is carried forward to cover potential financial implications of changes to the delivery of the budget in 2017/18;**
- (ii) the proposed calculation of topslice for 2016/17 be noted.**

1. Summary

This report gives:

- the final budget out-turn for 2015/16 (Appendix I);
- an update on the budget for 2016/17 (Appendix II);
- the calculation of recycling credits and top slice for 2016/17 (Appendix III).

2. Budget out-turn for 2015/16 (Appendix I)

Furniture Re-use Payments

The budget statement shows an underspend of £9,095 from a total budget of £53,979. The underspend is mainly due to the closure of Refurnish Paignton.

Devon Community Recycling Network (DCRN)

The full grant of £21,600 was awarded to DCRN at the beginning of the financial year. The majority of the grant was spent on the co-ordinator's salary, contributions to Junk Mail, management of DCRN Ltd and grants.

Devon Community Composting

A total of £32,648 was spent from a total budget of £35,000 leaving an underspend of £2,352. Expenditure included staff costs for the Co-ordinator (22 hrs p/w) and Education Assistant (16 hrs p/w), travel and publication of Junk Mail.

Real Nappy Campaign

There is an underspend of £6,340 from a total budget of £14,539. This is mainly due to a reduced level of volunteer activity and difficulties in recruiting.

Agenda Item 5

Don't let Devon go to waste and Online development

£45,764 has been spent from a total budget of £46,390 leaving an underspend of £790 due to funds received via the recycledevon.org website income generation system and lower than estimated costs for the website redesign and operating system upgrade. The allocation was spent on county-wide and District specific campaigns such as Ditch your junk mail, Great British Take Off, South Hams increased plastic recycling, Love Your Clothes, Replacement Containers and Home Composting plus Search Engine Optimisation, Online Development, Monitoring and Evaluation Research and Electronic newsletter production/distribution. It is proposed that the underspend be carried forward to assist with funding campaign activities in 2016/17.

Waste Education

The budget of £12,285 was spent in full on 12 schemes; comprising of 8 composting equipment and 5 coach costs to recycling centre/landfill site school visits.

Innovation Fund

A total of £2,623 has been spent from a total budget of £4,000 (including a £2,050 carry forward from the previous year) as follows:

1. Chryssi's Used Uniforms – awarded £2,413
2. Transition Town Totnes Jumble Trail – awarded £210

This would leave £1,377 to be carried forward.

Audit Fee

There is an underspend of £2,835 due to:

- i) reduced internal audit costs
- ii) reduced external audit costs
- iii) reduced internal staff time costs

3. Proposal

The statement shows the spending for the year and top slice income received. The outstanding sum after previously agreed allocations have been subtracted is £28,032 for carry forward. It is proposed that this is allocated to cover potential financial implications of changes to the delivery of the budget for 2017/18.

4. Budget Update for 2016/17 (Appendix II)

The statement gives an update on expenditure and income so far. Although expenditure to date is only £52,775 this is normal at this point in the calendar.

5. Proposed topslice calculation 2016/17 (Appendix III)

The topslice calculation for 2016/17 is based upon the total of waste arisings in 2015/16. See Appendix III for detailed calculations.

6. Sustainability Considerations

The recycling and waste minimisation activities funded by the budget are central to sustainable waste management.

7. Legal Considerations

The implications/consequences of the recommendations/proposed course of action have been taken into account in preparing the report.

8. Consultations/Representations/Technical data

The calculation of the budget situation has been supported by Devon County Council's finance team. There have been no formal consultations or representations.

9. Financial Considerations

The report concerns the DASWC budget and considers the potential options for the 2015/16 underspend. It further summarises the current spend against the 2016/17 budget and the topslice calculation.

10. Environmental Impact Considerations

There are no known negative environmental impacts relating to the recommendations.

11. Equality considerations

There are no equality considerations relating to the recommendations.

12. Risk Management Considerations

A risk register is kept for DASWC activities and will be updated as necessary.

13. Public Health Impact

There are no known public health impacts connected to the work of the committee other than positive ones which evolve from activities such as Love Food Hate Waste where healthy eating advice can be provided alongside waste prevention advice.

David Whitton
Head of Highways, Capital Development and Waste

Electoral Divisions: All

Local Government Act 1972: List of Background Papers

Contact for enquiries: Annette Dentith

Room No: Matford Lane Offices, County Hall, Exeter. EX2 4QD

Tel No: 01392 383190

Background Paper	Date	File Ref.
------------------	------	-----------

Nil

ad031016das budget outturn 2015 16 and 2016 17
hk 04 051016

Appendix I
To HCW/16/72

Devon Authorities Waste Reduction & Recycling Committee. Budget monitoring statement 2015/16

	2015/16		Total Budget 2015/16	Expenditure to Date	Income to Date	Orders Raised (not yet paid)	Further Planned Spend (what is left to spend)	2015/16	
	DAWRRC Agreed Budget	Carryforward to be Approved by Committee						Projected Outturn	Variation from Budget
	£	£	£	£	£	£	£	£	£
2015/16 Allocations (funded by top-slicing) :									
Devon Community Recycling Network	21,600		21,600	21,600		0	0	21,600	0
Furniture Re-use Payments	53,979		53,979	44,884		0	0	44,884	-9,095
Devon Community Composting Network	35,000		35,000	32,724		0	0	32,724	-2,276
Real Nappy Campaign	13,500	1,039	14,539	8,199	0	0	0	8,199	-6,340
Don't let Devon go to waste & Online	46,330	60	46,390	45,764	-164	0	0	45,600	-790
Waste Education	12,285		12,285	12,285		0	0	12,285	0
Innovation Fund	1,950	2,050	4,000	2,623		0	0	2,623	-1,377
Audit Fee	4,000		4,000	1,165		0	0	1,165	-2,835
Re-use Officer Post		2,423	2,423	0		0	0	0	-2,423
Total Funded from Top-Slicing	188,644	5,572	194,216	169,244	-164	0	0	169,080	-25,136
Funded by :									
Contribution brought forward from 2014/15	0	-37,240			-37,240		0	-37,240	0
Less approved carry over commitment	-10,000	10,000	-10,000				0	0	0
Cmttd c/f for 16/17 Re-use Officer Post		15,577					0	0	
Re-use Officer Post - Torbay's share deducted		2,076					0	0	
CARRYFORWARD BALANCE to 2016/17					45,681			45,681	
Income Received from Recycling Credits Top Slice in 2015/16:									
CONTRIBN DEVON COUNTY COUNCIL	-93,027				-93,027		0	-93,027	0
CONTRIBN EAST DEVON DIST COUNCIL	-9,963				-7,875		0	-7,875	2,088
CONTRIBN EXETER CITY COUNCIL	-9,532				-9,477		0	-9,477	55
CONTRIBN MID DEVON DIST COUNCIL	-7,978				-9,754		0	-9,754	-1,776
CONTRIBN NORTH DEVON DIST COUNCIL	-10,300				-9,853		0	-9,853	447
CONTRIBN SOUTH HAMS DIST COUNCIL	-9,062				-8,642		0	-8,642	420
CONTRIBN TEIGNBRIDGE DIST COUNCIL	-12,319				-13,213		0	-13,213	-894
CONTRIBN TORBAY BOROUGH COUNCIL	-14,597				-14,597		0	-14,597	0
CONTRIBN TORRIDGE DIST COUNCIL	-6,882				-6,309		0	-6,309	573
CONTRIBN WEST DEVON DIST COUNCIL	-4,984				-4,775		0	-4,775	209
Total Income	-188,644	-9,587	-10,000	0	-169,080	0	0	-169,080	1,123
Net Total	0	-4,015	184,216	169,244	-169,244	0	0	0	-24,013

Carryforward 14/15:	-37,240
Commitment 15/16	10,000
Additional amounts added to projects	5,572
Balance of 14/15 carryforward	-21,668
15/16 allocation (underspend)/overspend	-25,136
Income received shortfall/(surplus)	1,123
15/16 carryforward:	-45,681
Cmttd c/f for 16/17 Re-use Officer Post	0
Torbay's share deducted	0
15/16 carryforward	-45,681

Appendix II
To HCW/16/72

Devon Authorities Waste Reduction & Recycling Committee. Budget monitoring statement 2016/17							
2016/17				2016/17			
	DAWRRC Agreed Budget	Carryforward to be Approved by Committee	Total Budget 2016/17	Expenditure to Date	Income to Date	Projected Outturn	Variation from Budget
	£	£	£	£	£	£	£
2016/17 Allocations (funded by top-slicing) :							
Devon Community Recycling Network	18,350		18,350	18,350		18,350	0
Furniture Re-use Payments	48,812		48,812	-5,494		48,812	0
Devon Community Composting Network	34,000		34,000	10,748		34,000	0
Real Nappy Campaign	11,850		11,850	3,079	0	11,850	0
Don't let Devon go to waste & Online	45,900	790	46,690	12,515	-249	46,690	0
Waste Education	11,000		11,000	5,147		11,000	0
Innovation Fund	1,718	1,282	3,000	192		3,087	87
Audit Fee	4,000		4,000	0		4,000	0
Re-use Officer Post		15,577	15,577	8,239		15,577	0
Total Funded from Top-Slicing	175,630	17,649	193,279	52,775	-249	193,366	87
Funded by :							
Contribution brought forward from 2015/16		-45,681			-45,681	-45,681	0
Less approved carry over commitment		0	0			0	0
Income Received from Recycling Credits Topslice in 2016/17:							
CONTRIBN DEVON COUNTY COUNCIL	-90,839				0	-90,839	0
CONTRIBN EAST DEVON DIST COUNCIL	-9,760				1,700	-9,760	0
CONTRIBN EXETER CITY COUNCIL	-9,035				239	-9,035	0
CONTRIBN MID DEVON DIST COUNCIL	-7,644				-589	-7,644	0
CONTRIBN NORTH DEVON DIST COUNCIL	-10,272				2,500	-10,272	0
CONTRIBN SOUTH HAMS DIST COUNCIL	-8,812				2,100	-8,812	0
CONTRIBN TEIGNBRIDGE DIST COUNCIL	-12,339				3,400	-12,339	0
CONTRIBN TORBAY BOROUGH COUNCIL	-15,138				0	-15,138	0
CONTRIBN TORRIDGE DIST COUNCIL	-6,930				-15	-6,930	0
CONTRIBN WEST DEVON DIST COUNCIL	-4,861				-179	-4,861	0
Total Income	-175,630	-45,681	0	0	-36,526	-221,311	0
Net Total	0	-28,032	193,279	52,775	-36,775	-27,945	87

Carryforward 15/16:	-45,681
Commitment 16/17	0
Additional amounts added to projects	17,649
Balance of 15/16 carryforward	-28,032
16/17 allocation (underspend)/overspend	87
Income received shortfall/(surplus)	0
16/17 carryforward:	-27,945

HCW/16/73

Devon Authorities Strategic Waste Committee
18 October 2016

Budget Proposal for 2017/18

Report of the Head of Highways, Capital Development and Waste

Please note that the following recommendations are subject to consideration and determination by the Committee before taking effect

Recommendation: It is recommended that

- (i) the Committee recognise the contribution to waste prevention, re-use, recycling and composting that all of the previous projects supported by the Devon Authorities Waste Reduction and Recycling Committee have made;**
- (ii) the proposed 2017/18 Devon Authorities Strategic Waste Committee budget is allocated as in Appendix I to this report with project details given in Appendix II;**
- (ii) a contract is procured to commence in April 2017 for a proposed Waste Reduction and Education Project with the contract to be funded for a 2 year period.**

1. Summary

Previous projects supported by the former Devon Authorities Waste Reduction and Recycling Committee (DAWRRC) budget have made a valuable contribution to managing waste towards the higher end of the waste hierarchy and in particular supporting community led initiatives. However in times of severe financial constraint it has been necessary to review all aspects of the previous budget and only continue to support those projects which continue to deliver value for money, as well as look at the provision of support in a different way. As a consequence it is proposed that only 'Re-use credits' and 'Don't let Devon go to waste' continue to be supported. It is further proposed that the remaining funding be used to deliver a new waste education/enforcement project through the procurement of a contract for a two year period.

2. Introduction

For many years the DAWRRC budget has supported the community sector and other initiatives with the aim of reducing the amount of waste disposed of in Devon and increasing recycling rates. A review of all of the projects supported in 2016/17 by the budget has been undertaken with each being assessed in terms of value for money, current method of delivery, impact on waste arisings and wider community benefits.

3. Assessment of previous budget allocation

Devon Community Recycling Network (DCRN)

DCRN is an independent company which has been funded by the previous DAWRRC for more than 15 years to promote sustainable waste management within the community sector of Devon. In February 2016 it was agreed with DCRN that they would research opportunities and apply for external funding for DCRN to operate beyond 2016-17. They appointed a new coordinator in June 2016 and it is understood that the post will be funded for approximately 18 months to December 2017 and will aim to be self funding from January

Agenda Item 6

2018. It was also agreed with DCRN Directors that this network needs to invigorate itself and become self sustaining. In recent years it has supported a number of valuable initiatives but it is no longer visibly making a difference nor appearing to be achieving the original aims of the network. Consequently it is proposed that this project be no longer funded.

Devon Community Composting Network (DCCN)

DCCN has been funded by the previous DAWRRC for more than 15 years during which time it has built up a highly regarded reputation for assisting the development of community composting groups. In recent times it has focussed more so on assisting schools on how to use their composting infrastructure.

The DCCN Coordinator and assistant are funded directly by the previous DAWRRC budget with the DCCN Co-ordinator employed directly by the County Council. Whilst the work that is undertaken is commendable, it is hard to evaluate what impact it is actually having. Hence it is considered that composting education will be delivered through home composting campaign work and the post of DCCN Coordinator will no longer be supported.

Re-use Credits

Reuse Credits are paid to 15 groups across Devon who repair furniture for re-use, whilst training the long term unemployed to do this work and selling the products to those on lower incomes at a reduced cost. It is still felt that that this was a valuable and tangible project showing value for money in terms of tonnes of waste reused and having an added social value. Hence it is proposed to continue to support Re-use Credits but with a cap on funding of £49,000. See Appendix II for more detail.

Don't let Devon go to waste campaign work and online communications

This campaign forms the backbone of waste management communications in Devon and Torbay – it includes social media, website, road shows, radio and bus back advertising and editorials in local newspapers. All the work is monitored and campaigns targeted and researched to ensure maximum impact. An important element is supporting each authority with their initiatives and this work will continue through the element funded by the County Council. However, it is considered that the element of this work financed by DASWC should focus on the important area of food waste reduction with an allocated budget of £40,630. See Appendix II for more detail.

Devon Real Nappy Network

Currently a team of 12 volunteers run nappy events raising awareness of the possibility of choosing real nappies instead of disposables, saving parents money and reducing their environmental impact. Trial kits are offered along with money off vouchers. Although the impact of this work is favourable to those who use it, it is a small number of people who are attracted to the scheme. It is therefore proposed that it will no longer be possible to directly support the network of volunteers other than by signposting their events via websites and social media.

Schools Grants

A small amount of money has been made available to support schools to recycle and compost. They received workshops from the Waste Educators and then find small amounts of money useful for transport to a recycling centre, or to put towards a composter or recycling bins. Although schools appreciate this fund it is not considered essential and hence this funding could be reallocated.

Innovation Fund

This has not proved very successful in terms of innovative bids for funding and it is proposed that this funding could be reallocated.

Audit

There was a requirement for an external audit of DAWRRC accounts costing up to £4,000, however only an internal audit is now required at a cost of approximately £1,000. It is proposed the remaining fund could be reallocated.

Reuse officer

The underspend from 2015/16 was allocated to support the Reuse Officer post once WRAP funding came to an end. Whilst this post has been critical to raising the profile of re-use in Devon and Torbay it cannot continue to be funded from an underspend. Unfortunately it is also very difficult to measure the impact of this work other than by number of workshops held or number of items mended for example. It is therefore considered that although elements of this work are valuable any element of reuse funded by the DASWC budget will be limited to measurable initiatives.

4. Proposal

It is proposed to continue to support Reuse Credits and Don't let Devon go to waste initiatives directly through the DASWC budget for 2017/18. After audit requirements there will remain approximately £85,000 if the 2016/17 budget is used as a baseline. All DASWC authorities recognise the need to focus on waste prevention, re-use and recycling and it is considered that the best way to ensure accountability, visibility, efficient measurement and monitoring, and value for money, is via a contract. Although there will be overheads in any contract there is also back office support and wider knowledge and experience to support front line staff.

It is therefore proposed that a 2 year contract, as set out in Appendix II with potential to extend for 2 years, is let to the annual value of £85,000.

5. Conclusion

It is concluded that value for money will be provided for the £175,000 DASWC budget by further investing in Don't let Devon go to waste and reuse credits along with a new 2 year contract to promote waste prevention, reuse and recycling.

6. Financial Considerations

The proposed budget allocation is detailed in Appendix I. Supporting the proposed projects leads to waste being dealt with in line with the waste hierarchy. Reducing, reusing and recycling and composting bring cost savings for both collection and disposal. Managing an element of the budget via a contract will give more accountable financial control over budget expenditure.

7. Sustainability Considerations

All the proposals should result in waste being managed higher up the hierarchy and therefore meet sustainable waste management objectives. The long term sustainability of DCRN needs to be consolidated through the company finding alternative sources of funding.

Agenda Item 6

8. Carbon Impact Considerations

Reduced tonnage to landfill and energy from waste means a decrease in carbon emissions.

9. Equality Considerations

There are no equality considerations relating to the recommendation.

10. Legal Considerations

Legal advice will be taken in relation to any personnel affected by the proposal.

11. Risk Management Considerations

The DASWC Risk Register will be amended in light of recommendations being agreed. Risk management will also be built into the new contract. There are no risks envisaged with the Reuse Credit and Don't let Devon go to waste budget allocations.

12. Public Health Impact

There are no impacts to public health identified.

David Whitton
Head of Highways, Capital Development and Waste

Electoral Divisions: All

Local Government Act 1972: List of Background Papers

Contact for enquiries: Annette Dentith

Room No: Matford Offices, County Hall, Exeter. EX2 4QD

Tel No: 01392 383000

Background Paper	Date	File Ref.
Nil		

ad041016das budget proposals 2017 18
hk 03 051016

Proposed budget allocation

	16/17	17/18	17/18 transfer to "new contract"
Devon Community Recycling Network (DCRN)	£18,350	0	£18,350
Devon Community Composting Network (DCCN)	£34,000	0	£34,000
Reuse Credits	£48,812	£49,000	-£188
Don't let Devon go to waste (DLDGWTW)	£45,900	£40,630	£5,270
Nappies	£11,850	0	£11,850
Schools	£11,000	0	£11,000
Innovation	£1,718	0	£1,718
Audit	£4,000	£1,000	£3,000
Total	£175,630	£90,630	£85,000
Underspend 15/16: Reuse officer	£18,000	0	0

Proposals for the 2017/18 budget

Re-use Credits

Not-for-profit and charitable furniture reuse groups continue to divert large quantities of household goods from disposal enabling the provision of furniture to people on low incomes, the creation of opportunities for the training and development of staff and volunteers, and enhancing employment opportunities. In 2015/16 more than 800 tonnes of furniture were distributed by the projects. Assuming a disposal cost of £118/t for 2015/16, it would have cost £94,400 to dispose of the furniture that was reused, which shows the value for money from the reuse credits payments and a saving of £50,400 for the year.

Reuse credits are an important contribution to the work of community reuse projects across the County and also demonstrates a real commitment from the local authorities supporting them. It is proposed that DASWC continues to pay reuse credits on furniture for 2017/18. The bid for 2017/18 amounts to £53,696 but it is proposed that the funds available are capped at the current level of £49,000. The reason for this is that each year this budget is underspent by an average of 16% equating to £10,000 a year (over the last 5 years, on an average budget of £61,000) due to the unpredictable nature of the groups' progress each year. The budget includes a contribution to the cost of work carried out by Refurnish to support and advise existing and developing/new projects.

These funds should only be available to Community Sector Reuse projects that are members of Refurnish Devon or the Furniture Reuse Network (FRN) and meet national good practice standards. Local Authority Officers validate project claims through regular audit in accordance with the Reuse Credit Guidance. If reuse credits were not paid, or paid at a reduced level many projects that rely heavily on this funding would close or provide a reduced level of service reducing the quantity of goods diverted and increasing costs to customers on low incomes.

Don't let Devon go to waste

Over the years the Committee has supported the Don't let Devon go to waste campaign work and the money has been spent on wide ranging support for a number of initiatives each year, for example in 2016/17 it supported/will support an 18-24 year olds hard to reach campaign, home composting work, Love Your Clothes (textiles) campaign, a Christmas campaign and the Thank you awards. The funds are also spent on keeping the excellent joint website Recycledevon.org up to date, on market research and on the popular E-newsletter.

It is proposed that these latter activities continue to be funded but that the bulk of the budget allocation, instead of being spread thinly on a number of initiatives, is used to focus on food waste reduction initiatives and encouraging home composting. The proposed expenditure is highlighted below.

Proposed expenditure 2017/18	Estimate
Food waste reduction initiatives including Love Food Hate Waste and home composting promotion	£27,630
E-newsletter	£1,000
Recycledevon.org annual hosting fee	£480
Recycledevon.org Search Engine Optimisation fee	£3,000
Income generation administration fee	£720
Online continuous creative development	£3,000
Monitoring and evaluation research	£4,800
Total	£40,630

Waste Reduction and Education Project

The aim of the project will be to reduce the Local Authority Collected Waste arisings and increase recycling by setting up a contract to:

- Pro-actively promote waste prevention, reuse and recycling
- Increase participation and capture rates of recyclable materials
- Increase levels of home composting and reduction of food waste
- Improve awareness levels of residents around contamination and recycling
- Assist each authority to enhance its recycling rate to maximise its income and reduce its costs
- Decrease the amount of material in the residual waste stream for recycling/composting as a result of waste reduction measures and improved capture of materials for reuse, recycling and composting
- Report progress, monitor and evaluate the impact of the work undertaken
- Communicate with Recycledevon

It is proposed that the contractor will be asked to provide 3 full time equivalent personnel who will each operate in a defined area of Devon/Torbay to minimise travel. The authorities will confirm the areas in the contract. At the beginning of each contractual year the parties will agree on area specific work plans in order to measure progress towards the desired outcomes and overall aims of the project.

It is proposed that the County Council would let this contract on behalf of the partnership. A Partnership Working Group will measure the contractor's performance via quarterly contract meetings, and there will be regular meetings with relevant districts/Torbay, providing information on the progress of the project and upcoming events and activities. The contractor will work with district and Torbay officers, the Recycledevon lead and the County Council Waste Education Team to ensure the work delivered under the contract is in keeping with the broader Don't let Devon go to waste/Recycle Devon's behavioural change work. The contractor will complete an end of year report highlighting performance, feedback, good practice, and recommendations for the following year.

